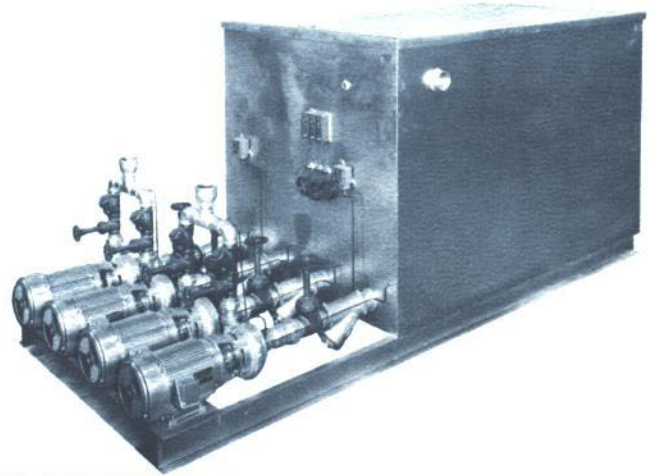


# HEAT RECOVERY SYSTEM, INC. PROCESS WATER SYSTEM



## GENERAL DESCRIPTION

These process water systems combine the technology of an air cooled heat exchanger with a pump station reservoir to recycle costly water and lower sewer charges. Both units feature rugged construction with attention to end user compatability for years of reliable operation. All units are mounted on heavy steel frames and are thoroughly reinforced throughout. Several options are available which allow for various configurations and levels of automatic control based on temperatures and pressures. Custom design to fit specific operations is available.

## Standard Specifications

Approx. Reservoir Size	Capacity (Gallons)	Pump Capacity	No. Of Pumps	Pump Size	Heat Transfer* BTU/HR
2' wide 7' long 4' high	200	35 GPM	2	3/4 HP	330,000
4' wide 8' long 4' high	525	60 GPM	2	1.5 HP	575,000
4' wide 9' long 4' high	625	75 GPM 90 GPM	2 or 4	2 HP	725,000 875,000
5' wide 12' long 5' high	1000 or 1200	125 GPM 150 GPM 175 GPM	2 or 4	5 HP	1,225,000 1,450,000 1,700,000
5' wide 12' long 6' high	2000	250 GPM 300 GPM	2 or 4	10 HP	2,250,000 2,750,000

\* Based on 80°F air with 120°F water into the heat exchanger.



A subsidiary of the J.L. Becker Company

Heat Recovery Systems Incorporated

41150 Joy Rd.  
Plymouth, MI 48170

Phone: 734-656-2000 Fax: 734-656-2009

www.jlbecker.com

**MADE IN  
USA**